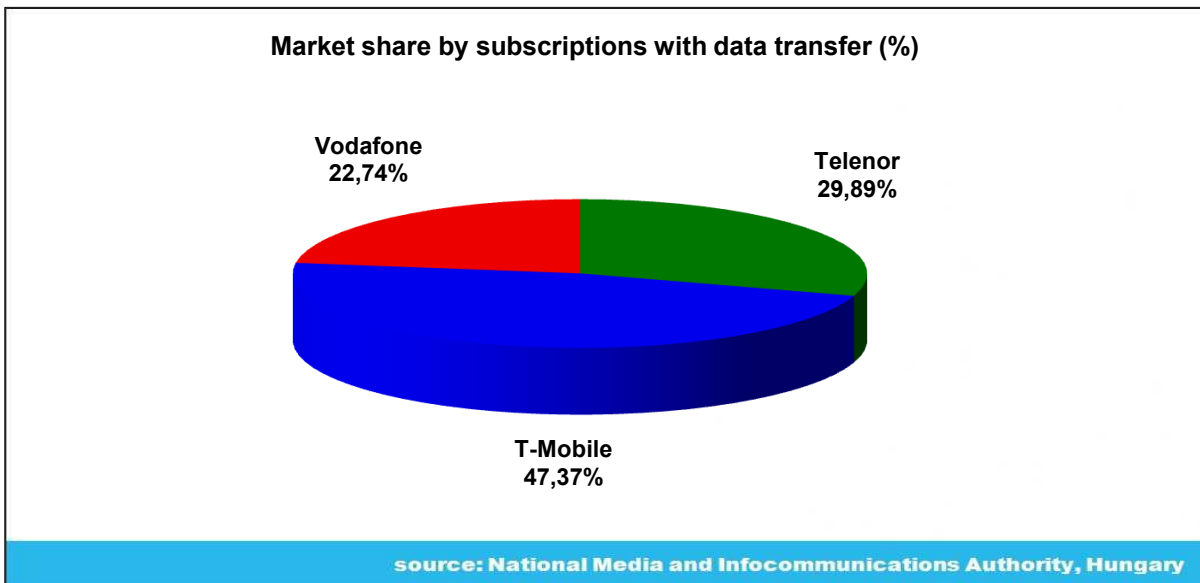
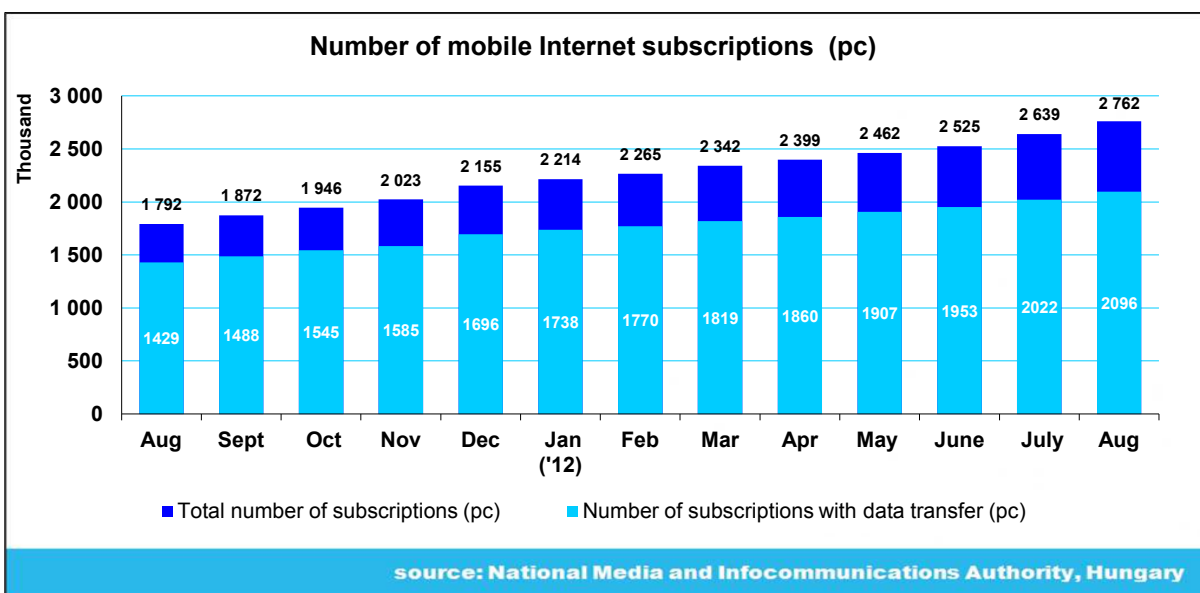


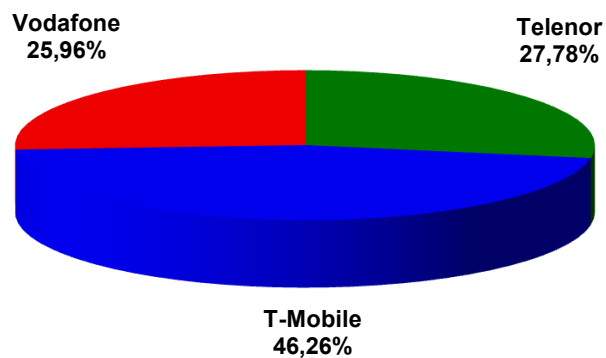
## Flash report on mobile internet, August 2012

### Month-end summary subscription figures

|              | Number of mobile Internet subscriptions         |                                    | Total amount of data transferred (GByte) | Average amount of data transferred (GByte) |
|--------------|---|------------------------------------|--|--|
|              | Number of subscriptions with data transfer (pc) | Total number of subscriptions (pc) |  |  |
| Telenor      | 626 392   | 767 149                            | 1 049 265                                | 1,68                                       |
| T-Mobile     | 992 612   | 1 277 571                          | 846 660                                  | 0,85                                       |
| Vodafone     | 476 581   | 717 041                            | 388 695                                  | 0,82                                       |
| <b>Total</b> | <b>2 095 585</b>                                | <b>2 761 761</b>                   | <b>2 284 620</b>                         | <b>1,09</b>                                |

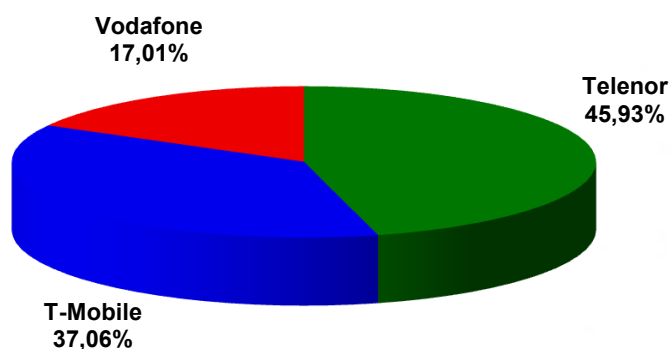


Market share by total number of subscriptions (%)



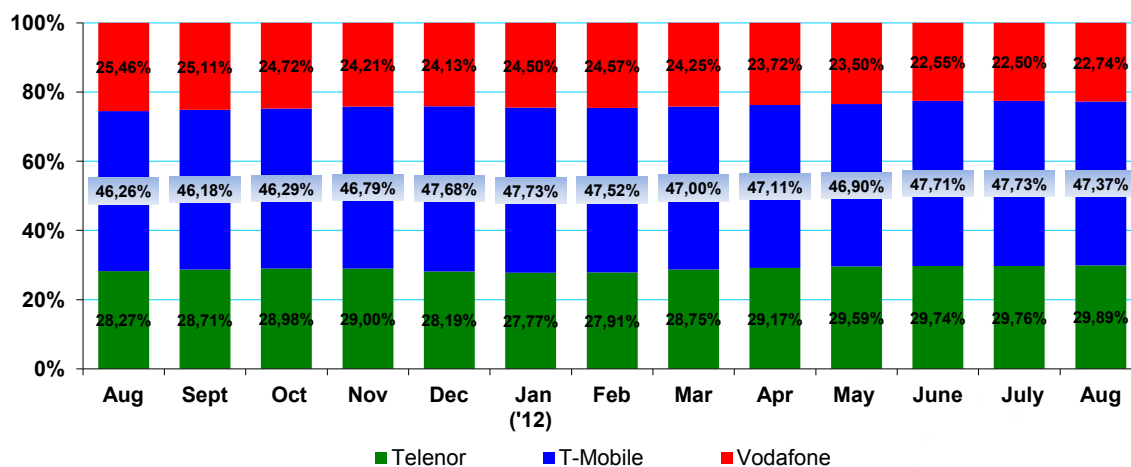
source: National Media and Infocommunications Authority, Hungary

Market share by amount of data transferred (%)



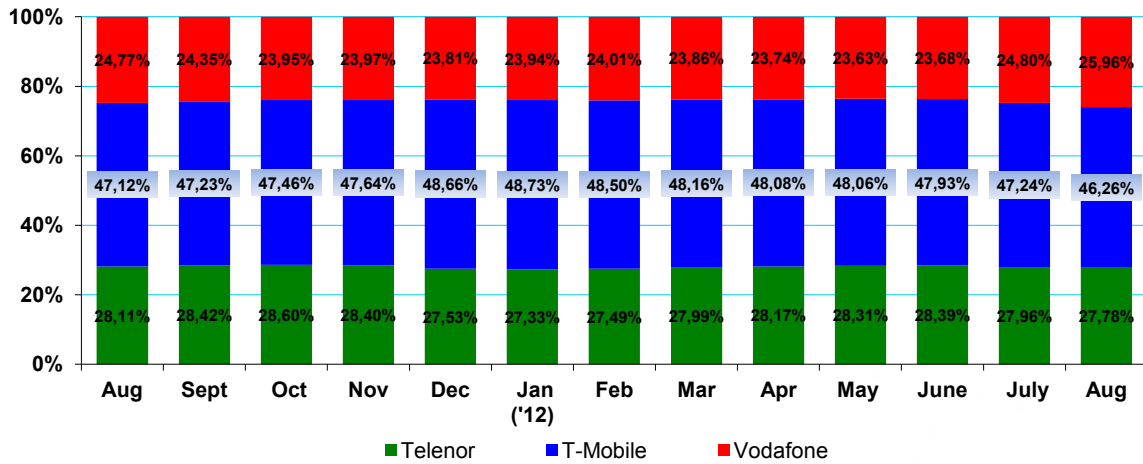
source: National Media and Infocommunications Authority, Hungary

Market share by subscriptions with data transfer (%)



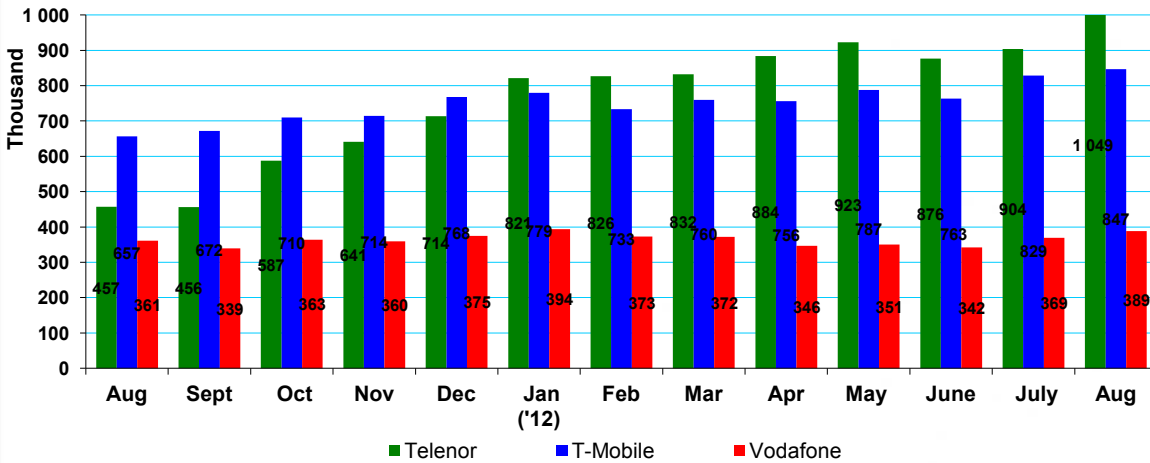
source: National Media and Infocommunications Authority, Hungary

Market share by total number of subscriptions (%)



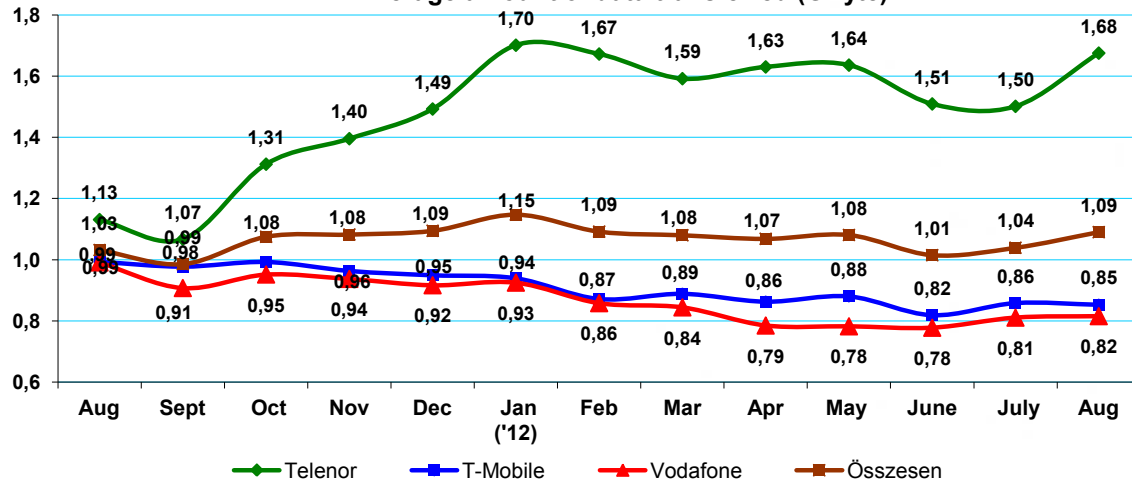
source: National Media and Infocommunications Authority, Hungary

Total amount of data transferred (GByte)



source: National Media and Infocommunications Authority, Hungary

Average amount of data transferred (GByte)



forrás: Nemzeti Média- és Hírközlési Hatóság

## Notes:

(The above values have been generated using the definitions accepted by the operators in the document "**Mobile Internet Forum MATRIX Draft V14**".)

**Total number of subscriptions:** Number of SIMs with active Internet service with at least 10Mbytes of data available to be transferred and a monthly charge greater than zero (prepaid or postpaid) on the last day of the given calendar month. (Any SIM with more than one active tariff plan shall nevertheless be considered as a single SIM.)

**Number of subscriptions with data transfer:** The number of SIMs within the total number of subscriptions with at least 1 byte data transfer on the Internet over the last three months.

**Total amount of data transferred:** The sum of the data downloads and uploads by the subscribers as defined above in the given calendar month.

**Average amount of data transferred:** Total amount of data transferred divided by the number of subscribers with data transfer.