



Flash Report on Mobile Internet

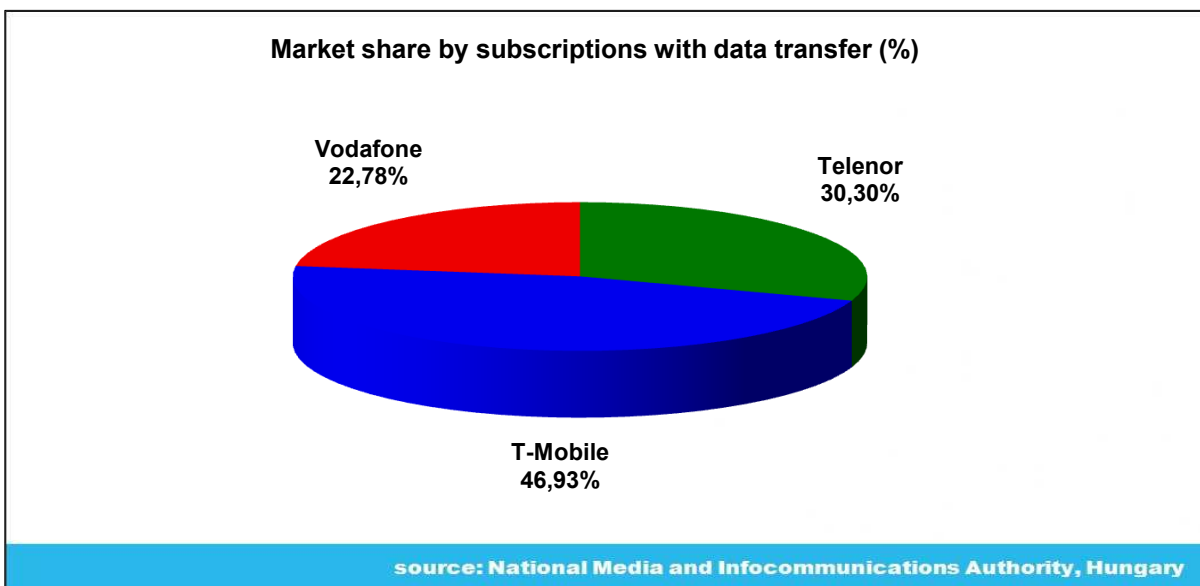
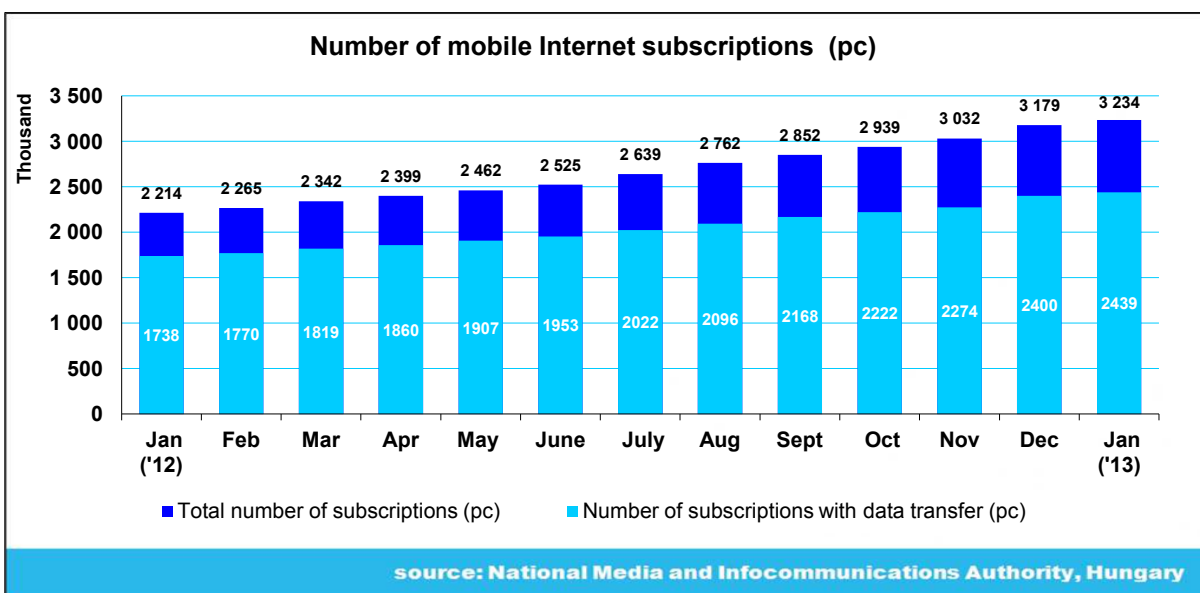
January 2013

nmh
NATIONAL MEDIA AND
INFOCOMMUNICATIONS
AUTHORITY • HUNGARY

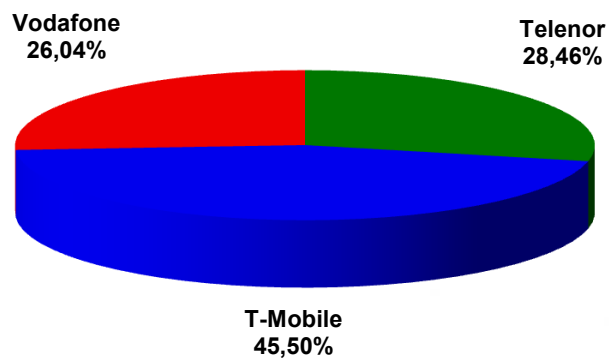
Flash report on mobile internet, January 2013

Month-end summary subscription figures

| | Number of mobile Internet subscriptions | | Total amount of data transferred (GByte) | Average amount of data transferred (GByte) |
|--------------|---|------------------------------------|--|--|
| | Number of subscriptions with data transfer (pc) | Total number of subscriptions (pc) | | |
| Telenor | 739 002 | 920 496 | 1 170 376 | 1,58 |
| T-Mobile | 1 144 658 | 1 471 302 | 995 860 | 0,87 |
| Vodafone | 555 621 | 842 096 | 423 722 | 0,76 |
| Total | 2 439 281 | 3 233 894 | 2 589 958 | 1,06 |

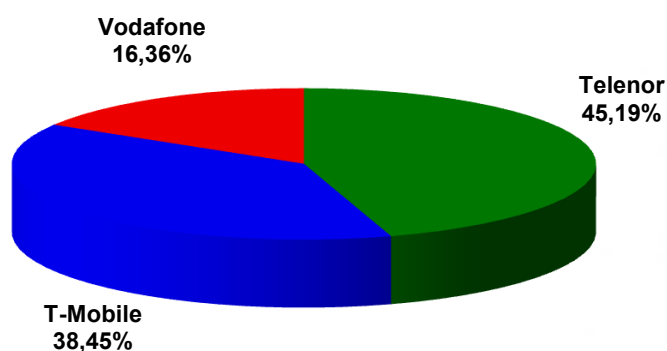


Market share by total number of subscriptions (%)



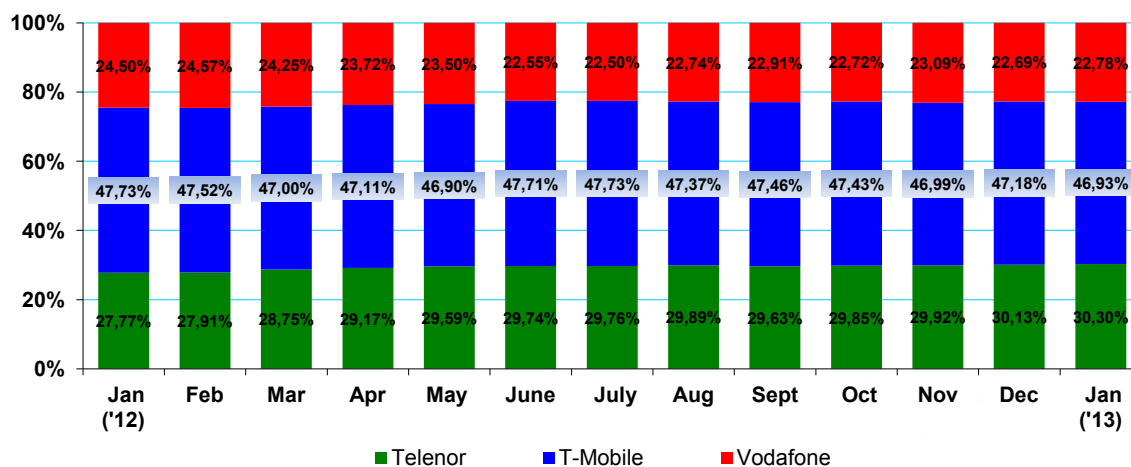
source: National Media and Infocommunications Authority, Hungary

Market share by amount of data transferred (%)



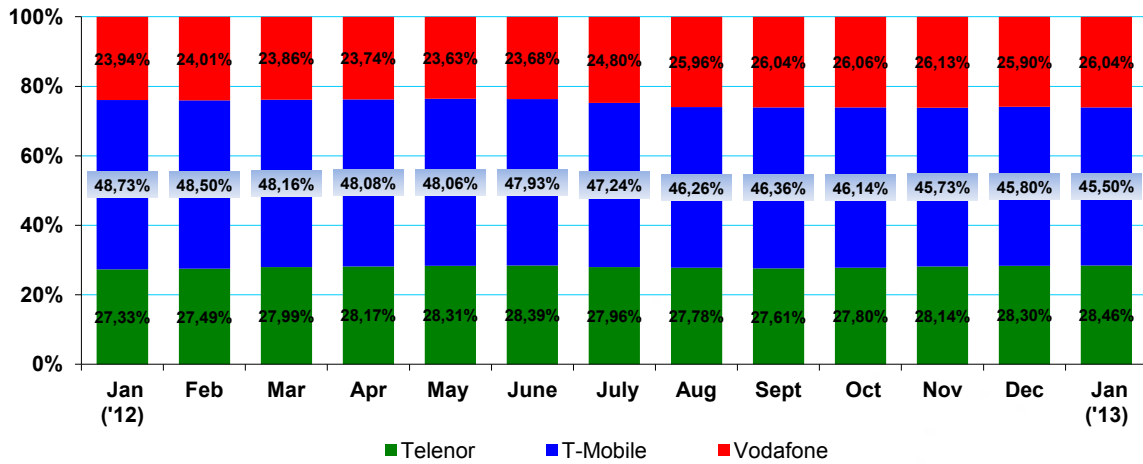
source: National Media and Infocommunications Authority, Hungary

Market share by subscriptions with data transfer (%)



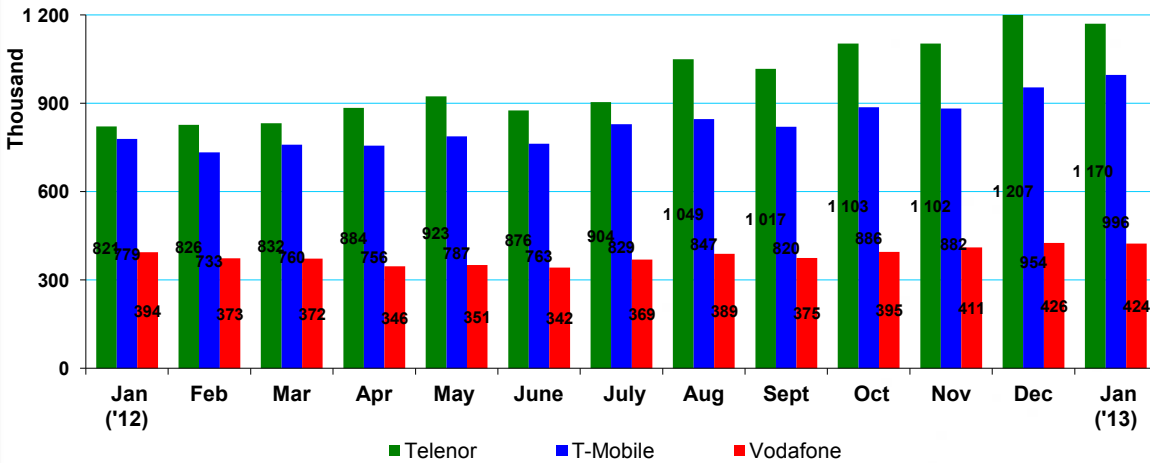
source: National Media and Infocommunications Authority, Hungary

Market share by total number of subscriptions (%)



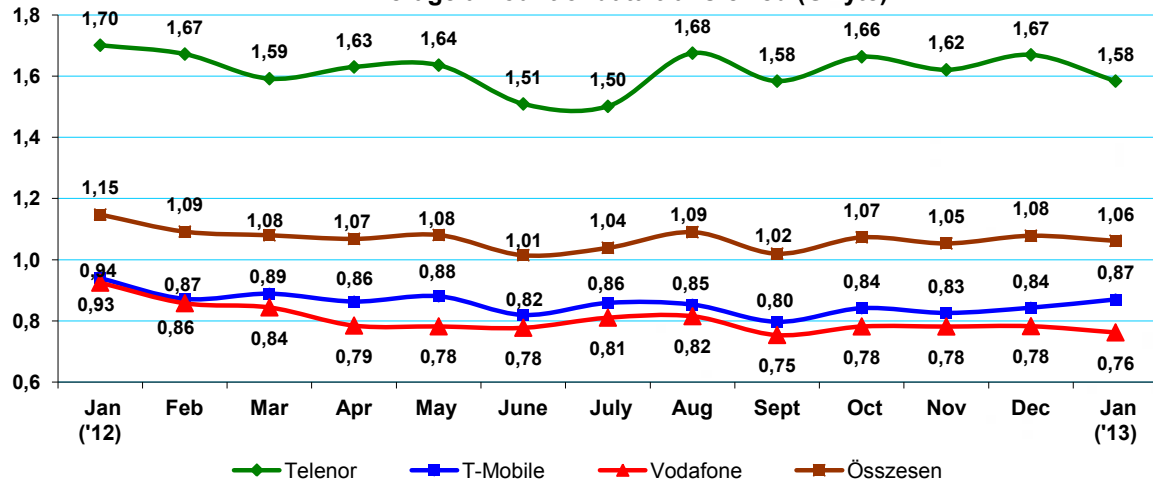
source: National Media and Infocommunications Authority, Hungary

Total amount of data transferred (GByte)



source: National Media and Infocommunications Authority, Hungary

Average amount of data transferred (GByte)



forrás: Nemzeti Média- és Hírközlési Hatóság

Notes:

(The above values have been generated using the definitions accepted by the operators in the document "**Mobile Internet Forum MATRIX Draft V14**".)

Total number of subscriptions: Number of SIMs with active Internet service with at least 10Mbytes of data available to be transferred and a monthly charge greater than zero (prepaid or postpaid) on the last day of the given calendar month. (Any SIM with more than one active tariff plan shall nevertheless be considered as a single SIM.)

Number of subscriptions with data transfer: The number of SIMs within the total number of subscriptions with at least 1 byte data transfer on the Internet over the last three months.

Total amount of data transferred: The sum of the data downloads and uploads by the subscribers as defined above in the given calendar month.

Average amount of data transferred: Total amount of data transferred divided by the number of subscribers with data transfer.